

wonderful waves



Treat yourself or a friend to Miyu, a luxurious one-skein scarf by Anniken Allis

This is the perfect starter project for lace beginners as the pattern is not too complex. The beautiful seashore edgings, inspired by Japanese waves, make Miyu really dainty and the soft cashmere yarn ensures that winter chills will be kept at bay. The scarf is worked entirely from one skein so it's a great way to try a sumptuous luxury yarn without spending a fortune.



MIYU PATTERN

Cast on 53 sts
 ** Row 1: k3, yfwd, k2tog, * k12 (yfwd, k2tog) twice, rep from * to last 16 sts, k12, yfwd, k2tog, k2
 Row 2 - 4: Rep Row 1 three times more **
 Work chart 14 times
 Work rows 1 - 4 of chart once more
 Rep ** to **
 Cast off

k2tog, k2
 Row 2 and all WS rows: k3, yfwd, k2tog, p11, * p1, yon, k2tog, yfwd, k2tog, p11 *, p1, yon, k2tog, k2
 Row 5, 9 and 13: k3, yfwd, k2tog, * (k1, yfwd) three times, k1, ssk three times, k2, (yfwd, k2tog) twice *, (k1, yfwd) three times, k1, ssk three times, k2, yfwd, k2tog, k2

Row 7 and 11: k3, yfwd, k2tog, * k2, yfwd, k1, yfwd, k1, yfwd, ssk three times, k2, (yfwd, k2tog) twice *, k2, yfwd, k1, yfwd, k1, yfwd, ssk three times, k2, yfwd, k2tog, k2
 Row 15 and 17: k3, yfwd, k2tog, * k12, yfwd, k2tog, yfwd, k2tog *, k12, yfwd, k2tog, k2
 Rows 19, 23 and 27: k3,

Written chart pattern

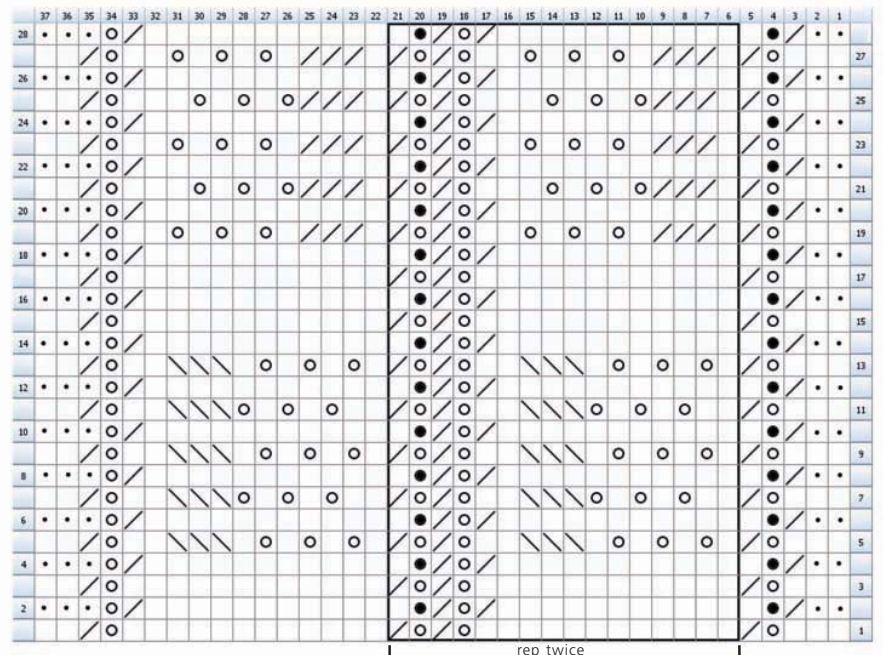
NOTE: Work instructions between * and * twice
 Row 1 and 3: k3, yfwd, k2tog, * k12, yfwd, k2tog, yfwd, k2tog *, k12, yfwd,



"This scarf is the perfect use for a luxurious skein of cashmere. It's a thicker laceweight and an easy lace pattern which makes it perfect for lace beginners."

LK DESIGNER ANNIKEN ALLIS

Chart



- RS:K WS:P
- YON
- SSK
- YFWD
- K2TOG
- WS:K

knit knowledge

Measurements & sizes

Width: 23 cm
Length: 140 cm

Knit kit

Yarn: YarnAddict Amazing Cashmere Lace, shade Lilac Bliss, one 55g skein
Needles: 4mm
Stitchmarkers, optional

10cm

10cm

tension square

36 rows

4mm needles

26 sts

About the yarn

YarnAddict Amazing Cashmere Lace is a luxuriously soft yarn made of 100% cashmere. It's perfect for lace work and accessories.

Need an alternative?

Malabrigo 100% Baby Merino Laceweight is a soft, hand-dyed yarn available in a range of pretty solid and stripy shades. It must be gently hand washed and dried flat.

For abbreviations see page 78



knit wise

Know your place

To help keep your position in the pattern, attach a stitch marker between each pattern repeat.

If you want to make the scarf narrower or wider, add or subtract stitches in groups of 16 sts.

The perfect project for lace beginners

yfwd, k2tog, * k1, k2tog three times, (k1, yfwd) three times, k2, (yfwd, k2tog) twice *

k1, k2tog three times, (k1, yfwd) three times, k2, yfwd, k2tog, k2
□ Row 21 and 25: k3, yfwd, k2tog, * k1, k2tog three times, (yfwd, k1) three times, k2, (yfwd, k2tog) twice *, k1, k2tog three times, (yfwd, k1) three times, k2, yfwd, k2tog, k2

Let's knit! pattern

let's shop!

YarnAddict
Amazing Cashmere Lace
costs £12.00 per 55g (366m) skein from YarnAddict, www.yarnaddict.co.uk

Get 15% off! Turn to page 52

Malabrigo 100% Baby Merino Laceweight
costs £8 per 50g (430m) skein from Get Knitted, www.getknitted.com

Dress, £22, New Look