

Natalie is an *incredibly* sweet *babysuit* by *Zoë Halstead*

To bear or not to bear? That is the question. Natalie is an adorable babysuit in Rico Baby Cotton Soft DK. Using simple intarsia colourwork, you can choose whether your pattern will include a bunny or bear motif. Available in sizes for babies up to nine months, it will make a fantastic gift for any new or expectant mother.

CHOOSE
FROM
TWO
MOTIFS!



MEASUREMENTS & SIZES

Age (mths):

0-3	(3-6,	6-9)
To fit chest (approx):		
40.5cm	(45.5cm,	48cm)
Actual size (approx):		
47cm	(53cm,	56cm)
Length side neck to hem (approx):		
51cm	(55cm,	59.5cm)
Underarm (approx):		
14cm	(16cm,	18cm)
Inside leg (approx):		
14.5cm	(15.5cm,	16.5cm)

KNIT KIT

Yarn: Rico Baby Cotton Soft DK, (A) shade 001 White; 3 (4, 4) 50g balls, (B) shade 004 Beige, (C) shade 027 Black, (D) shade 008 Lilac; one 50g ball of each

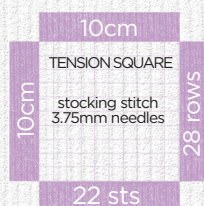
Needles: 3.25mm, 3.75mm

Buttons: three small

Stitch holders

Popper Tape: 50cm length, 1.75cm wide with poppers 1.5cm apart

Sewing needle and thread



ABOUT THE YARN

Rico Baby Cotton Soft DK is soft to the touch, made from 50% cotton, 50% acrylic.

Need an alternative yarn? James C. Brett Cotton On DK is a smooth yarn available in several different shades.

FOR ABBREVIATIONS SEE PAGE 88



Rico Baby Cotton Soft DK costs £2.29 per 50g (125m) ball from 0800 505 3300, www.woolwarehouse.co.uk

James C. Brett Cotton On DK costs £1.99 per 50g (145m) ball from www.purplelinda.crafts.co.uk



Back

LEFT LEG

Using 3.25mm needles and yarn A, cast on 23 (23, 25) sts

- Starting with a k row, work four rows in st st
- Row 5: * k1, p1, rep from * to last st, k1
- Row 6: p1, * k1, p1, rep from * to end
- Rep Rows 5-6
- Change to 3.75mm needles and, beg with a k row, work in st st until leg meas 7.5 (5.5, 5.0) cm from beg with hem rolled up, ending with a p row **
- Kfb at beg of next and every foll fourth row to 28 (30, 32) sts
- Starting with a p row, work three rows in st st
- Cut yarn, transfer sts to stitch holder

RIGHT LEG

- Work as Left Leg to **
- Kfb at end of next and every foll fourth row to 28 (30, 32) sts
- Starting with a p row, work three rows in st st

JOIN LEGS

- With RS facing, k across 27 (29, 31) sts of Right Leg, kfb in last st, then kfb in first st of left leg, k across 27 (29, 31) sts. 58 (62, 66) sts
- Starting with a p row, work in st st until Back meas 8 (13, 14) cm from join, ending after a p row
- Dec one st at each end of next row. 56 (60, 64) sts ***
- Starting with a p row, work in st st until Back meas 16 (26.5, 29) cm from join, ending after a p row
- Dec one st at each end of next row. 54 (58, 62) sts

FIRST SIZE ONLY

- Starting with a p row, work in st st until Back meas 24cm from join, ending with a p row
- Dec one st at each end of next row. 52 sts

ALL SIZES

- Starting with a p row, work in st st until Back meas 26.5 (28.5, 31) cm from join, ending after a p row

SHAPE RAGLAN ARMHOLES

- Cast off 5 (6, 5) sts at beg of next two rows. 42 (46, 52) sts
- Next row: k1, k2tog, k to last three sts, sl 1, k1, pssso, k1
- P one row
- Rep last two rows until 16 (18, 20) sts rem
- Leave rem sts on stitch holder

Front

- Work as for Back to *** noting that Left Leg will be Right Leg and Right Leg will be Left Leg

FIRST SIZE ONLY

- Starting with a p row, work in st st until Front meas 16cm from join, ending after a p row
- Dec one st at each end of next row. 54 sts

ALL SIZES

- Starting with a p row, work in st st until Front is 12 (12, 8) rows shorter than Back to beg of armhole shaping, ending after a p row

MOTIF CHART

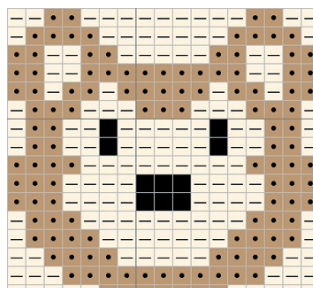
NOTE: Motifs can be swiss darned. If using intarsia method, cont as folls:

- K19 (22, 24), k across 17 sts of first row of chart, k18 (21, 23) to end
- Next row: p18 (21, 23), p across 17 sts of second row of chart, p19 (22, 24) to end
- These two rows set motif chart position
- Cont in st st, work a further 2 (4, 0) rows of chart
- Dec one st at each end of next pattern row. 52 (58, 62) sts
- Starting with a p row, work a further 7 (5, 5) rows of chart

SHAPE RAGLAN ARMHOLES

NOTE: Cont to work chart as set

- Cast off 9 (10, 9) sts at beg of next row, then cast off 5 (6, 5) sts at beg of foll row. 38 (42, 48) sts
- Next row: k1, k2tog, k across chart and to last three sts, sl 1, k1, pssso, k1
- Next row: p across chart row as set
- Rep last two rows, completing the Chart, and until 20 (22, 24) sts rem



Key

- A - 001 White
- B - 004 Beige
- C - 027 Black

SHAPE FRONT NECK

- Next row: k1, k2tog, turn
- Next row: p2, turn
- Next row: k2tog
- Cut yarn, thread through rem st, pull up tightly and fasten off
- With RS facing, sl centre 10 (12, 14) sts onto a stitch holder for Front Neck, rejoin yarn to rem seven sts, sl 1, k1, pssso, k2, sl 1, k1, pssso, k1
- Next row: p
- Next row: [sl 1, k1, pssso] twice, k1
- Next row: p
- Next row: sl 1, k1, pssso, k1
- Next row: p
- Next row: k2tog
- Cut yarn, thread through rem st, pull up tightly and fasten off

Sleeves

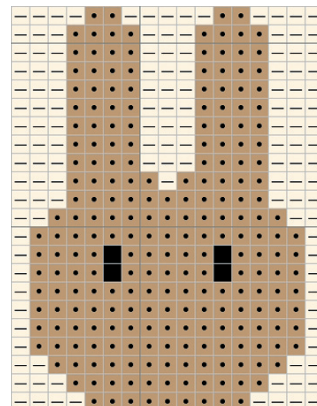
Using 3.25mm needles and yarn A, cast on 32 (34, 36) sts

- Starting with a k row, work four rows in st st
- Next row: * k1, p1, rep from * to end
- Rep last row three times more
- Change to 3.75mm needles and yarn D. Keeping four row stripe sequence throughout and beg with a k row, work in st st and kfb at each end of next and every foll sixth row to 44 (48, 52) sts
- Starting with a p row and cont stripe sequence, cont in st st until sleeve meas 14 (16, 18) cm from beg (with hem rolled up), ending after a p row

SHAPE RAGLAN

NOTE: Cont stripe sequence

- Cast off 5 (6, 5) sts at beg of next two rows. 34 (36, 42) sts
- Next row: k1, k2tog, k to last three sts, sl 1, k1, pssso, k1
- Next row: p
- Rep last two rows until 8 (8, 10) sts rem
- Leave rem sts on a stitch holder



knitwise

COLOUR ME CONFUSED?

When working in intarsia, keep your yarn close to the work using bobbins or washing pegs in order to prevent tangles. As you change colour, make sure you pull the new yarn over the old before knitting or purling your next stitch, as this will prevent holes in the pattern.

Gusset

Using 3.75mm needles and yarn A, cast on three sts

- Beg with a k row, work two rows in st st
- Kfb at each end of next and every foll alt row to 11 sts
- Beg with a p row, work 13 rows in st st
- Dec one st at each end of next and every foll alt row until three sts rem
- P one row
- Cast off

Tape strip (make two)

Using 3.25mm needles and yarn A, cast on six sts

- Work in garter st until strip, when slightly stretched, fits around inside leg from bottom of rib on one leg to bottom of rib on other leg
- Cast off

To make up

Weave in ends, tightening holes around intarsia motif. Fold gusset in half and place centre point at join of Front. Pin then sew shaped edge of gusset to front crotch. Sew tape strip to inside of each leg and along other edge of gusset. Sew other tape strip to Back around each inside leg. Sew popper tape to right side of tape strips so that poppers match up. If using swiss darning to create motif, do this now following charts and looking at instructions for row placement. Using black yarn, embroider a cross for the bunny's nose and mouth for the bear. Sew Back and Right Front raglan seams. Sew cast off sts of Left Sleeve to first 5 (6, 5) cast off sts of Left Front

Finishing

NECKBAND

Using 3.25mm needles, yarn A and with RS facing, pick up

Choose from a rabbit motif (as worn by Ivy) or a bear design (below)



and k three sts down Left Front neck, k10 (12, 14) sts of Front neck, pick up and k six sts up Right Front neck, k8 (8, 10) sts of Right sleeve, k16 (18, 20) sts of Back neck, then k8 (8, 10) sts of Left sleeve. 51 (55, 63) sts

- Next row: * k1, p1, rep from * to last st, k1
- Next row: * p1, k1, rep from * to last st, p1
- Next row: * k1, p1, rep from * to last st, k1
- Starting with a k row, work four rows in st st
- Cast off

BUTTONBAND

□ Using 3.25mm needles, yarn A and with RS facing, pick up and k three sts along edge of rib only of neckband, then pick up and k 24 (26, 30) sts along raglan edge of Left

sleeve. 27 (29, 33) sts

- Work three rows in rib as given for neckband
- Cast off evenly in rib

BUTTONHOLE BAND

- Using 3.25mm needles, yarn A and with RS facing, beg above cast off sts, pick up and k 24 (26, 30) sts along Left raglan edge of Front, then pick up and k three sts along edge of rib only of neckband. 27 (29, 33) sts
- Work one row in rib as given for neckband
- Buttonhole row: rib 7 (7, 9), yrn, p2tog, [rib 6 (7, 8), yrn, work 2tog] twice, rib 2
- Work another row in rib as set
- Beg with a k row, work four rows in st st
- Cast off



To make up

Lap buttonhole band over button band and sew ends to cast off sts of Front. Sew on buttons to correspond with buttonholes. Sew whole of underarm and side seams, reversing seams for roll back hems. Press as per ball band instructions **LK**