



36

Intermediate

DUNGAREES

Stitches used

GARTER ST (G. st) using 3.5 mm & 4.0 mm needles

Row 1: k

Row 2: k

STOCKING STITCH (st st) using 4.0 mm needles

Row 1: k

Row 2: p

JACQUARD embroider using Chain St foll chart.

Jacquard Embroidery: see information pages.

Tension/Gauge

21 sts x 28 rows in st St using 4.0 mm needles = 4" (10cm) square.

Important: See BASIC instructions pages at beg of book.

To make

BACK:

RIGHT LEG:

Using 3.5 mm needles & Rotin cast on 27 (29-31-33) sts. Work in G. St for 6 rows. Change to 4.0 mm needles & cont in st St.

When work measures 1¼ (1¼-1½-2) in (3 [3-4-5] cm) [10-10-14-16 rows] total on next r.s. row inc 1 st at the end of the row (1 st in from edge).

(To Dec 1 st – 1 st in from edge: k1, k2tog, work to last 3 sts, slip 1, k1, pssso, k1.)

When work measures 2 (2¼-2¾-3) in (5 [6-7-8] cm) [16-20-22-24 rows] total leave the 28 (30-32-34) sts obtained on a stitch holder.

LEFT LEG:

Work as for Right Leg rev shaping.

With r.s. facing pick up both legs on one needle &

Sizes			3 mo.	6 mo.	12 mo.	24 mo.
			Number of balls			
BERGEREINE	Rotin	224.711	3	3	3	4
	Acidulé	233.251	1	1	1	1
	Berbère	235.481	1	1	1	1
SONORA	Melon	220.521	1	1	1	1
3.5 mm & 4.0 mm needles						
2 apple buttons ref. 641.791 (6/pkt)						

cast on 1 stitch between them. Cont on the 57 (61-65-69) sts obtained.

When work measures 5 (6¾-8¼-10) in (13 [17-21-25] cm) [40-50-62-72 rows] total dec 1 st at each end of next r.s. row (1 st in from edge) then on every foll 8th row twice.

(To Dec 1 st – 1 st in from edge: k1, k2tog, work to last 3 sts, slip 1, k1, pssso, k1.)

Cont on the 51 (55-59-63) sts obtained.

When work measures 8¼ (9¾-11½-13) in (21 [25-29-33] cm) [62-74-86-96 rows] total cont to work patt as follows: work 7 sts G. St, 37 (41-45-49) sts st St, 7 sts G. St (this creates borders).

Armholes:

When work measures 8½ (10-12-13½) in (22 [26-30-34] cm) [64-76-88-98 rows] total on next r.s. row cast off 3 sts & work to end.

Next row (w.s.): Cast off 3 sts, k4, p37 (41-45-49), k4.

Then dec as follows (working dec after the 4 sts of G. St):

(To Dec 2 sts – 4 sts from edge: k4, k3tog, work to last 7 sts, slip 1, k2tog, pssso, k4.)

(To Dec 1 st – 4 sts from edge: k4, k2tog, work to last 6 sts, slip 1, k1, pssso, k4.)

3 mths: 2 sts at each end of next 2 r.s. rows, then 1 st at each end of next 3 r.s. rows, then 1 st at each end of foll 4th row. 29 sts.

6 mths: 2 sts at each end of next 2 r.s. rows, then 1 st at each end of next 4 r.s. rows, then 1 st at each end of foll 4th row. 31 sts.

12 mths: 2 sts at each end of next 2 r.s. rows, then 1 st at each end of next 5 r.s. rows, then 1 st at each end of foll 4th row. 33 sts.

24 mths: 2 sts at each end of next 2 r.s. rows, then 1 st at each end of next 6 r.s. rows, then 1 st at each end of foll 4th row.

When armholes measure 2 (2¼-2¾-3) in (5 [6-7-8] cm) [78-94-108-120 rows total] work 7 rows in G. St then cast off all sts.

FRONT:

Work as for Back but when armholes measure approx 2¼ (2¾-3-3½) in (6 [7-8-9] cm) on the 5th row of G.St section make one 1 st buttonhole at each edge (3 sts from edge) as follows: k3, yfwd, k2tog, work to last 5 sts, k2tog, yfwd, k3.

POCKETS (2):

Using 3.5 mm needles & Acidule cast on 15 (17-19-

19) sts. Work in G St for 2 rows. Change to 4.0 mm needles & cont in st St.

When work measures 2¼ (2¾-3-3½) in (6 [7-8-9] cm) [18-20-22-24 rows] leave sts on a stitch holder.

STRAPS (2)

Using 3.5 mm needles & Berbere cast on 5 sts.

Work in G St. When work measures 4¾ (5½-6-6¼) in (13 [14-15-16] cm) [56-60-64-68 rows] total cast off all sts.

TO MAKE UP:

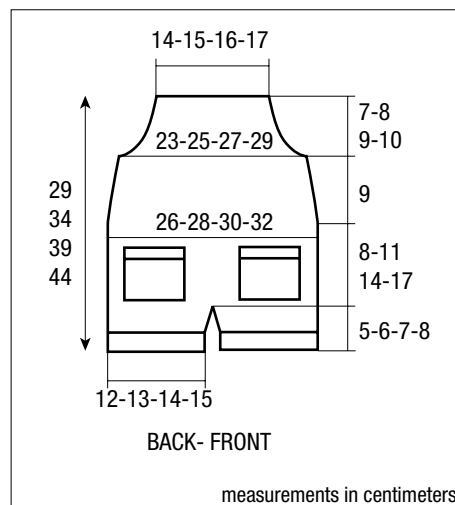
Embroider the Jacquard on the front placing the 1st row 7 (8-8½-9½) in (18 [20-22-24] cm) from the cast on edge & placing Stitch 13 of the chart in the centre.

Graft the base of each pocket to the centre of each leg on the Front 2 (2¼-3-4) in (5 [6-8-10] cm) from cast on edge. Then sew sides.

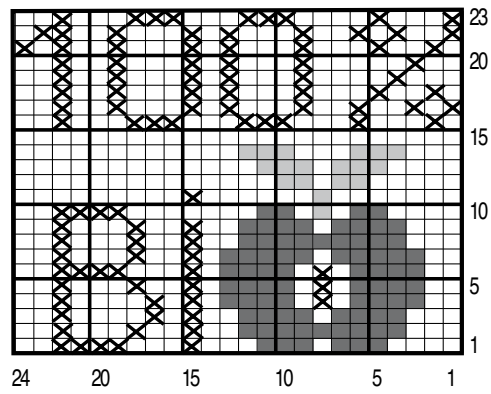
Sew side & leg seams.

Sew a strap to each edge of the top of Back.

Sew a button to the other end of the strap.



JACQUARD



□ = k1 ROTIN	■ = 1 embroidered st MELON
⊗ = 1 embroidered st BERBERE	◐ = 1 embroidered st ACIDULÉ